

EAST LISMORE & GIRARDS HILL Flood & Floor Levels

Floor/Flood Level Disclaimer

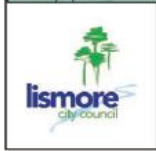
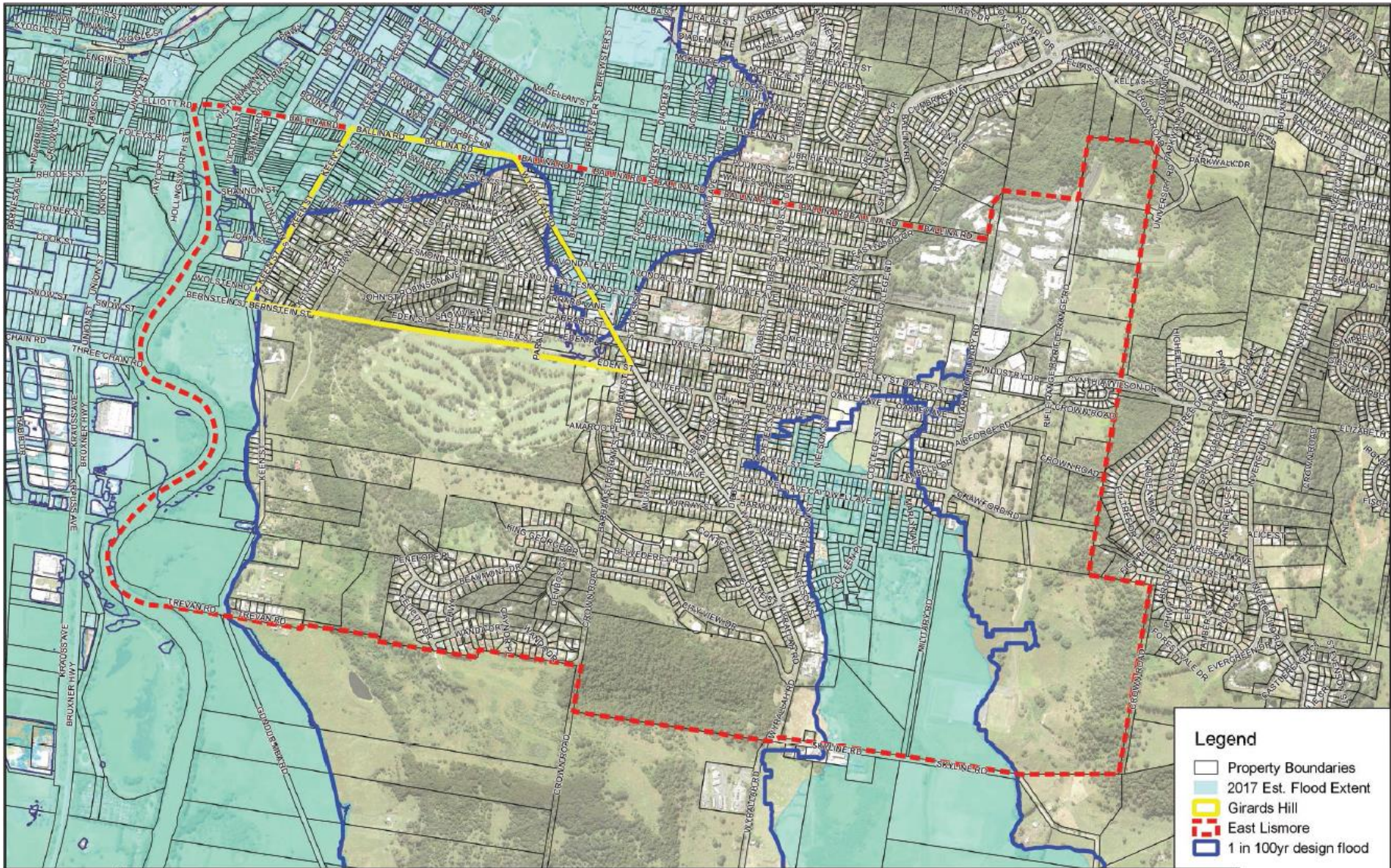
The information contained in this document has been provided to the Council from various sources. Some of the information has been verified by Council survey but in most instances the floor levels have been provided to Council and this document is a collation of the data. Therefore the information contained in this document is not endorsed by the Council as without error, omission or misdescription.

In providing the information in this document, Council does not profess to have any professional expertise or qualifications in matters covered by this information. Nor does Council hold itself out or represent to individuals or to the general public that it is or remains at any time the sole source of information on floods in Lismore and their impact.

The Council accordingly expressly disclaims all and any liability and responsibility in respect of loss, damage or injury to person or property arising from anything done or omitted to be done by any person in reliance, whether wholly or in part, upon any part of this information.

Any person having regard to the information contained in this document is encouraged to seek, at their discretion, all other sources of information on the subject matter as they consider appropriate, which may include local knowledge and/or professional advice.

The East Lismore and Girards Hill suburb boundaries are shown on the map overleaf along with the estimated extent of the 2017 flood and the 1 in 100 year ARI design flood extent.



East Lismore, Girards Hill Boundaries and Estimated Flood Extents



1:12,500

Lismore Flood and Floor Levels – East Lismore & Girards Hill

1. Floor levels were initially recorded December 1996 with updates in March 2006 and at various times since. The first column in the table below notes the dates where updates have occurred. Where no colour is shown the data was collected in 1996.
2. All levels are in metres AHD (Australian Height Datum).
3. Rowing Club Gauge reading for expected flood events 1 in 10 year ARI is 10.95 metres AHD // 1 in 100 year ARI 12.4 metres AHD.
4. Hydraulic modelling has not been undertaken in the parts of East Lismore south of Nielson Park. However hydraulic modelling elsewhere indicates a 1 in 100 year ARI flood level at the junction of Monaltrie Creek and Wilson River to be 11m AHD. This 'backs up' water into this area at a similar level.
5. Note during a flood event the estimated flood height is measured at the Rowing Club Gauge. Due to flood gradient the flood height at the property will not be the same as that estimated at the Gauge and could differ by up to 0.6 metres or more (lower or higher), depending on the property's location.

August 2018
July 2014
Mar 2006
Jul 2005
Jan 2005
July 2004
June 2004
January+ 2004
July 2003
May 2003
March 2003
January 2003
October 2002
August 2002
May 2002

Date	Street Address	Floor Level	Gate Level	Road Centre	Description	1in10yr Level	1in100yr Level
	2 Avondale Avenue EAST LISMORE	14.15	10.88	11.09	East Lismore Automotive		12.4
	2 Avondale Avenue EAST LISMORE	11.40	10.88	11.09	(Milano Motors)		12.4
	3 Avondale Avenue EAST LISMORE	13.68	10.77	11.06	Teknax Computer Repairs		12.4
	4 Avondale Avenue EAST LISMORE	12.91	10.80	11.08	Kemp Agencies		12.4
	10 Avondale Avenue EAST LISMORE	12.69	10.72	10.97			12.4
	11 Avondale Avenue EAST LISMORE	13.14	10.71	10.99			12.4
	12 Avondale Avenue EAST LISMORE	12.64	10.73	10.99			12.4
	15 Avondale Avenue EAST LISMORE	12.87	10.69	10.96			12.4
	16 Avondale Avenue EAST LISMORE	12.90	10.78	10.96			12.4
	17 Avondale Avenue EAST LISMORE	12.81	10.72	10.96			12.4
	18 Avondale Avenue EAST LISMORE	12.83	10.78	10.96			12.4
	19 Avondale Avenue EAST LISMORE	12.84	10.66	10.91			12.4
	22 Avondale Avenue EAST LISMORE	12.72	10.57	11.05			12.4
	24 Avondale Avenue EAST LISMORE	13.01	10.71	11.24			12.4

Date	Street Address	Floor Level	Gate Level	Road Centre	Description	1in10yr Level	1in100yr Level
	26 Avondale Avenue EAST LISMORE	14.75	12.34	12.63			12.4
	33 Avondale Avenue EAST LISMORE	12.59	10.98	11.24			12.4
	35 Avondale Avenue EAST LISMORE	13.13	11.97	12.01			12.4
	1/3 Avondale Avenue EAST LISMORE	13.37	10.75	10.94	Teknax Computer Repairs		12.4
	2/3 Avondale Avenue EAST LISMORE	13.37	10.75	10.94	Teknax Computer Repairs		12.4
	3/3 Avondale Avenue EAST LISMORE	13.37	10.75	10.94	Teknax Computer Repairs		12.4
	4/3 Avondale Avenue EAST LISMORE	13.37	10.75	10.94	Teknax Computer Repairs		12.4
	5/3 Avondale Avenue EAST LISMORE	13.37	10.75	10.94	Teknax Computer Repairs		12.4
	17 Ballina Road EAST LISMORE	12.29	8.56	8.63	vacant		12.3
	21 Ballina Road EAST LISMORE	10.86	7.79	7.96			12.3
	29 Ballina Road EAST LISMORE	10.67	10.30	10.37	City Toyota		12.3
	31 Ballina Road EAST LISMORE	10.67	10.30	10.37	City Toyota		12.3
	33 Ballina Road EAST LISMORE	10.67	10.30	10.37	City Toyota		12.3
	37 Ballina Road EAST LISMORE	10.10	9.79	10.31			12.3
	125 Ballina Road EAST LISMORE	13.51	11.90	10.65			12.3
	127 Ballina Road EAST LISMORE	13.30	11.13	10.72			12.4
	128 Ballina Road LISMORE	11.84	9.80	10.03			12.4
	129 Ballina Road EAST LISMORE	12.73	10.92	10.66			12.4
	131 Ballina Road EAST LISMORE	13.63	10.73	10.55			12.4
	133 Ballina Road EAST LISMORE	12.54	10.61	10.50	Life Chiropractic Centre		12.4
	135 Ballina Road EAST LISMORE	12.90	10.53	10.42			12.4
	137 Ballina Road EAST LISMORE	13.04	10.38	10.32			12.4
	139 Ballina Road EAST LISMORE	12.51	10.26	10.25			12.4
	141 Ballina Road EAST LISMORE	12.45	10.11	10.18	Parrish Rex Kitchens & Cabinets		12.4
	143 Ballina Road EAST LISMORE	12.34	9.95	10.10			12.4
	145 Ballina Road EAST LISMORE	13.04	9.86	10.04	NPC AMUSEMENTS Pool Room Supplies		12.4
	147 Ballina Road EAST LISMORE	12.93	9.86	10.03			12.4
	149 Ballina Road EAST LISMORE	12.12	9.82	10.00			12.4
	151 Ballina Road EAST LISMORE	12.38	9.72	10.09			12.4
	153 Ballina Road EAST LISMORE	12.99	9.87	10.10			12.4
	155 Ballina Road EAST LISMORE	12.00	9.83	10.10			12.4
	157 Ballina Road EAST LISMORE	11.98	9.79	10.14			12.4
	159 Ballina Road EAST LISMORE	13.03	9.80	10.16			12.4
	163 Ballina Road EAST LISMORE	12.15	9.85	10.15	displays 163		12.4
	165 Ballina Road EAST LISMORE	11.67	9.77	10.09			12.4

Date	Street Address	Floor Level	Gate Level	Road Centre	Description	1in10yr Level	1in100yr Level
	169 Ballina Road EAST LISMORE	13.05	9.57	9.95			12.4
	171 Ballina Road EAST LISMORE	12.85	9.56	9.88			12.4
	173 Ballina Road EAST LISMORE	11.81	9.57	9.75			12.4
	175 Ballina Road EAST LISMORE	11.68	9.43	9.57			12.4
	177 Ballina Road EAST LISMORE	12.47	9.30	9.50			12.4
	179 Ballina Road EAST LISMORE	11.44	9.15	9.42			12.4
	181 Ballina Road EAST LISMORE	12.44	9.42	9.46			12.4
	183 Ballina Road EAST LISMORE	11.65	9.56	9.61			12.4
	187 Ballina Road EAST LISMORE	11.75	9.71	9.78			12.4
	189 Ballina Road EAST LISMORE	11.86	9.68	9.91			12.4
	191 Ballina Road EAST LISMORE	12.79	9.89	10.10			12.4
	195 Ballina Road EAST LISMORE	12.92	9.96	10.21			12.4
	197 Ballina Road EAST LISMORE	12.12	10.02	10.29			12.4
	199 Ballina Road EAST LISMORE	12.28	10.08	10.43			12.4
	201 Ballina Road EAST LISMORE	12.73	10.89	11.04			12.4
	205 Ballina Road EAST LISMORE	12.87	11.39	11.51			12.4
	207 Ballina Road EAST LISMORE	13.26	12.56	12.63			12.4
	9 Barrie Street EAST LISMORE	12.78	10.39	10.25		10.7	12.2
	11 Barrie Street EAST LISMORE	12.12	9.88	9.96		10.7	12.2
	1 Bright Street EAST LISMORE	12.33	10.08	10.30			12.4
	2 Bright Street EAST LISMORE	12.91	10.12	10.30			12.4
	3 Bright Street EAST LISMORE	12.60	10.06	10.20			12.4
	4 Bright Street EAST LISMORE	12.41	10.06	10.20			12.4
	5 Bright Street EAST LISMORE	12.14	10.00	10.22			12.4
	6 Bright Street EAST LISMORE	11.99	9.81	10.22			12.4
	9 Bright Street EAST LISMORE	12.39	9.97	10.21			12.4
	10 Bright Street EAST LISMORE	11.86	9.90	10.25			12.4
	11 Bright Street EAST LISMORE	12.96	10.58	10.53			12.4
	12 Bright Street EAST LISMORE	12.08	10.12	10.51			12.4
	13 Bright Street EAST LISMORE	13.78	11.64	11.18			12.4
	14 Bright Street EAST LISMORE	12.42	10.34	10.73			12.4
	15 Bright Street EAST LISMORE	13.91	11.38	11.30			12.4
	15 Bright Street EAST LISMORE	13.91	11.38	11.30			12.4
	15 Bright Street EAST LISMORE	13.55	11.38	11.30			12.4
	15 Bright Street EAST LISMORE	13.55	11.38	11.30			12.4

Date	Street Address	Floor Level	Gate Level	Road Centre	Description	1in10yr Level	1in100yr Level
	18 Bright Street EAST LISMORE	12.18	10.39	10.81			12.4
	19 Bright Street EAST LISMORE	13.59	10.91	10.73			12.4
	20 Bright Street EAST LISMORE	13.187	10.69	11.09			12.4
	21 Bright Street EAST LISMORE	13.55	11.31	11.13			12.4
	22 Bright Street EAST LISMORE	12.44	10.79	11.17			12.4
	23 Bright Street EAST LISMORE	14.70	11.46	11.17			12.4
	24 Bright Street EAST LISMORE	12.59	10.76	11.20			12.4
	25 Bright Street EAST LISMORE	12.55	11.41	11.27			12.4
	26 Bright Street EAST LISMORE	12.58	10.82	11.27			12.4
	28 Bright Street EAST LISMORE	12.72	10.87	11.35			12.4
	30 Bright Street EAST LISMORE	13.73	11.05	11.39			12.4
	32 Bright Street EAST LISMORE	13.08	11.06	11.47			12.4
	40 Bright Street EAST LISMORE	13.69	12.86	13.06			12.4
	35 Caldwell Avenue EAST LISMORE	11.723	10.744	11.396			11.000
	45 Caldwell Avenue EAST LISMORE	11.517	11.061	11.383			11.000
	46 Caldwell Avenue EAST LISMORE	10.744	10.914	11.191			11.000
	47 Caldwell Avenue EAST LISMORE	11.115	10.914	11.191	Multitask Human Resources Foundation		11.000
	48 Caldwell Avenue EAST LISMORE	11.494	11.094	11.164			11.000
	49 Caldwell Avenue EAST LISMORE	11.812	10.997	11.180			11.000
	51 Caldwell Avenue EAST LISMORE	11.807	10.975	11.198			11.000
	52 Caldwell Avenue EAST LISMORE	11.042	10.851	11.186			11.000
	54 Caldwell Avenue EAST LISMORE	11.119	11.052	11.253			11.000
	55 Caldwell Avenue EAST LISMORE	11.342	10.991	11.254			11.000
	56 Caldwell Avenue EAST LISMORE	11.183	11.099	11.269			11.000
	57 Caldwell Avenue EAST LISMORE	12.031	10.932	11.342			11.000
	58 Caldwell Avenue EAST LISMORE	locked gate	11.131	11.342			11.000
	59 Caldwell Avenue EAST LISMORE	11.028	10.874	10.893			11.000
	60 Caldwell Avenue EAST LISMORE	12.349	11.145	11.400			11.000
	63 Caldwell Avenue EAST LISMORE	11.642	11.468	11.586			11.000
	64 Caldwell Avenue EAST LISMORE	11.296	11.298	11.556			11.000
	65 Caldwell Avenue EAST LISMORE	11.143	11.233	11.619			11.000
	66 Caldwell Avenue EAST LISMORE	11.642	11.468	11.636			11.000
	67 Caldwell Avenue EAST LISMORE	11.437	11.465	11.664			11.000
	68 Caldwell Avenue EAST LISMORE	11.680	11.536	11.663			11.000
	55A Caldwell Avenue EAST LISMORE	11.370	11.035	11.263			11.000

Date	Street Address	Floor Level	Gate Level	Road Centre	Description	1in10yr Level	1in100yr Level
	22 Cathcart Street EAST LISMORE	12.15	10.05	10.23			12.3
	24 Cathcart Street EAST LISMORE	12.12	9.99	10.16			12.3
	26 Cathcart Street EAST LISMORE	12.29	9.95	10.24			12.3
	27 Cathcart Street EAST LISMORE	12.62	10.15	10.32			12.3
	28 Cathcart Street EAST LISMORE	12.15	10.06	10.32			12.3
	29 Cathcart Street EAST LISMORE	12.24	9.95	10.36			12.3
	30 Cathcart Street EAST LISMORE	13.40	10.22	10.34			12.3
	32 Cathcart Street EAST LISMORE	12.89	10.30	10.44			12.3
	33 Cathcart Street EAST LISMORE	12.39	10.05	10.45			12.3
	34 Cathcart Street EAST LISMORE	12.20	10.77	10.81			12.3
	35 Cathcart Street EAST LISMORE	12.20	10.27	10.68			12.3
	37 Cathcart Street EAST LISMORE	11.93	10.34	10.81			12.3
	38 Cathcart Street EAST LISMORE	14.38	11.54	11.47			12.3
	39 Cathcart Street EAST LISMORE	12.12	10.66	11.20			12.3
	41 Cathcart Street EAST LISMORE	12.55	11.17	11.85			12.3
	42 Cathcart Street EAST LISMORE	15.45	13.08	12.63			12.3
	45 Cathcart Street EAST LISMORE	12.26	11.61	12.28			12.3
	49 Cathcart Street EAST LISMORE	13.51	13.42	14.00			12.3
	55 Cathcart Street EAST LISMORE	13.51	13.42	14.00			12.3
	1 Clarice Street EAST LISMORE	11.19	9.97	10.13			12.4
	2 Clarice Street EAST LISMORE	12.19	10.04	10.19			12.4
	3 Clarice Street EAST LISMORE	12.94	10.08	10.19			12.4
	4 Clarice Street EAST LISMORE	12.41	10.08	10.32			12.4
	5 Clarice Street EAST LISMORE	12.42	10.12	10.32			12.4
	6 Clarice Street EAST LISMORE	12.57	10.13	10.41			12.4
	7 Clarice Street EAST LISMORE	12.65	10.14	10.41			12.4
	8 Clarice Street EAST LISMORE	12.72	10.18	10.46			12.4
	9 Clarice Street EAST LISMORE	13.17	10.28	10.46			12.4
	10 Clarice Street EAST LISMORE	13.36	10.24	10.51	3 Units		12.4
	11 Clarice Street EAST LISMORE	12.79	10.23	10.51			12.4
	12 Clarice Street EAST LISMORE	12.25	10.28	10.53			12.4
	13 Clarice Street EAST LISMORE	12.41	10.31	10.53			12.4
	15 Clarice Street EAST LISMORE	12.51	10.32	10.56			12.4
	16 Clarice Street EAST LISMORE	12.05	10.30	10.55			12.4
	18 Clarice Street EAST LISMORE	13.02	10.38	10.65			12.4

Date	Street Address	Floor Level	Gate Level	Road Centre	Description	1in10yr Level	1in100yr Level
	22 Clarice Street EAST LISMORE	12.50	10.45	10.70			12.4
	24 Clarice Street EAST LISMORE	12.40	10.51	10.83			12.4
	26 Clarice Street EAST LISMORE	12.59	10.49	10.86			12.4
	27 Clarice Street EAST LISMORE	12.86	10.68	10.91			12.4
	28 Clarice Street EAST LISMORE	12.66	10.57	10.87			12.4
	32 Clarice Street EAST LISMORE	12.69	10.67	10.96			12.4
	34 Clarice Street EAST LISMORE	12.74	10.73	11.00			12.4
	2A Clarice Street EAST LISMORE	12.17	10.07	10.13			12.4
	1 Colleen Street EAST LISMORE	11.200	10.470	10.287			11.000
	3 Colleen Street EAST LISMORE	11.200	10.470	10.287			11.000
	4 Colleen Street EAST LISMORE	11.268	10.434	10.218			11.000
	5 Colleen Street EAST LISMORE	11.424	10.626	10.394			11.000
	7 Colleen Street EAST LISMORE	11.618	10.644	10.341			11.000
	9 Colleen Street EAST LISMORE	11.438	10.644	10.341			11.000
	11 Colleen Street EAST LISMORE	11.297	10.618	10.255			11.000
	13 Colleen Street EAST LISMORE	11.293	10.491	10.089			11.000
	15 Colleen Street EAST LISMORE	11.274	10.148	9.967			11.000
	17 Colleen Street EAST LISMORE	11.139	10.339	10.035			11.000
	18 Colleen Street EAST LISMORE	11.097	10.111	9.767			11.000
	19 Colleen Street EAST LISMORE	10.063	10.233	10.035			11.000
	20 Colleen Street EAST LISMORE	10.775	10.100	9.888			11.000
	21 Colleen Street EAST LISMORE	10.955	10.008	9.91.73			11.000
	22 Colleen Street EAST LISMORE	11.426	10.334	9.879			11.000
	23 Colleen Street EAST LISMORE	11.306	10.271	9.993			11.000
	26 Colleen Street EAST LISMORE	11.603	10.221	9.993			11.000
	27 Colleen Street EAST LISMORE	11.812	10.221	9.993			11.000
	28 Colleen Street EAST LISMORE	11.603	10.221	9.993			11.000
	25A Colleen Street EAST LISMORE	11.793	10.221	9.993			11.000
	84 College Street EAST LISMORE	11.161	10.753	10.615			11.000
	85 College Street EAST LISMORE	11.620	10.765	10.601			11.000
	86 College Street EAST LISMORE	11.471	10.784	10.533			11.000
	88 College Street EAST LISMORE	11.471	10.784	10.533			11.000
	90 College Street EAST LISMORE	11.442	10.427	10.388			11.000
	92 College Street EAST LISMORE	11.207	10.427	10.388			11.000
	94 College Street EAST LISMORE	11.671	10.499	10.353			11.000

Date	Street Address	Floor Level	Gate Level	Road Centre	Description	1in10yr Level	1in100yr Level
	98 College Street EAST LISMORE	11.352	10.268	10.194			11.000
	100 College Street EAST LISMORE	11.318	10.268	10.194			11.000
	101 College Street EAST LISMORE	11.137	10.450	10.050			11.000
	102 College Street EAST LISMORE	11.329	10.396	10.091			11.000
	103 College Street EAST LISMORE	11.118	10.314	9.946			11.000
	104 College Street EAST LISMORE	11.066	10.525	10.039			11.000
	105 College Street EAST LISMORE	11.260	10.175	9.919			11.000
	106 College Street EAST LISMORE	11.118	10.314	9.946			11.000
	2 Cottee Street EAST LISMORE	12.96	10.67	10.96			12.4
	3 Cottee Street EAST LISMORE	12.62	10.60	10.84			12.4
	4 Cottee Street EAST LISMORE	12.58	10.56	10.88			12.4
	5 Cottee Street EAST LISMORE	12.53	10.52	10.83			12.4
	6 Cottee Street EAST LISMORE	12.67	10.53	10.64			12.4
	8 Cottee Street EAST LISMORE	12.78	10.63	10.83	2 Units		12.4
	9 Cottee Street EAST LISMORE	12.62	10.52	10.81			12.4
	11 Cottee Street EAST LISMORE	12.70	10.50	10.83			12.4
	12 Cottee Street EAST LISMORE	12.48	10.50	10.82			12.4
	13 Cottee Street EAST LISMORE	12.72	10.52	10.81			12.4
	14 Cottee Street EAST LISMORE	12.50	10.52	10.65			12.4
	3A Cottee Street EAST LISMORE	10.89	10.89	10.83			12.4
	3 Eastside Place EAST LISMORE	10.901	10.648	10.428			11.000
	5 Eastside Place EAST LISMORE	11.063	10.122	10.428			11.000
	6 Eastside Place EAST LISMORE	11.261	10.459	10.428			11.000
	7 Eastside Place EAST LISMORE	11.068	10.162	10.428			11.000
	8 Eastside Place EAST LISMORE	11.261	9.975	10.428			11.000
	10 Elizabeth Street EAST LISMORE	11.768	11.025	11.010			11.000
	12 Elizabeth Street EAST LISMORE	10.901	10.779	10.737			11.000
	13 Elizabeth Street EAST LISMORE	10.912	10.842	10.856			11.000
	14 Elizabeth Street EAST LISMORE	10.679	10.468	10.402			11.000
	15 Elizabeth Street EAST LISMORE	10.719	10.503	10.491			11.000
	74 Esmonde Street EAST LISMORE	12.12	12.18	12.68			12.4
	75 Esmonde Street EAST LISMORE	13.80	11.50	11.82			12.4
	79 Esmonde Street EAST LISMORE	12.02	11.45	11.65	(Shed)		12.4
	79 Esmonde Street EAST LISMORE	12.33	11.45	11.61			12.4
	81 Esmonde Street EAST LISMORE	13.67	11.36	11.54			12.4

Date	Street Address	Floor Level	Gate Level	Road Centre	Description	1in10yr Level	1in100yr Level
	86 Esmonde Street EAST LISMORE	13.22	11.22	11.43			12.4
	88 Esmonde Street EAST LISMORE	13.08	11.20	11.43			12.4
	90 Esmonde Street EAST LISMORE	13.40	11.18	11.42			12.4
	91 Esmonde Street EAST LISMORE	12.15	11.14	11.42			12.4
	92 Esmonde Street EAST LISMORE	12.03	11.04	11.39			12.4
	94 Esmonde Street EAST LISMORE	13.16	10.97	11.38			12.4
	97 Esmonde Street EAST LISMORE	13.25	10.98	11.29			12.4
	99 Esmonde Street EAST LISMORE	13.18	10.91	11.32			12.4
	100 Esmonde Street EAST LISMORE	13.38	10.98	11.35			12.4
	101 Esmonde Street EAST LISMORE	12.35	12.23	12.82			12.4
	7 First Avenue EAST LISMORE	13.01	10.00	10.20			12.4
	9 First Avenue EAST LISMORE	11.85	9.89	10.21			12.4
	11 First Avenue EAST LISMORE	12.06	9.97	10.26			12.4
	13 First Avenue EAST LISMORE	12.23	9.98	10.30			12.4
	15 First Avenue EAST LISMORE	12.89	10.15	10.34	8 UNITS		12.4
	19 First Avenue EAST LISMORE	12.26	10.08	10.40			12.4
	21 First Avenue EAST LISMORE	12.27	10.22	10.53			12.4
	25 First Avenue EAST LISMORE	12.28	10.19	10.55			12.4
	27 First Avenue EAST LISMORE	12.53	10.43	10.52			12.4
	30 First Avenue EAST LISMORE	12.64	10.37	10.61			12.4
	31 First Avenue EAST LISMORE	12.65	10.50	10.61			12.4
	32 First Avenue EAST LISMORE	12.44	10.42	10.67			12.4
	33 First Avenue EAST LISMORE	12.53	10.48	10.67			12.4
	1 Gail Place EAST LISMORE	11.405	10.222	10.022			11.000
	3 Gail Place EAST LISMORE	10.676	10.166	10.113			11.000
	4 Gail Place EAST LISMORE	10.789	10.327	10.122			11.000
	5 Gail Place EAST LISMORE	11.227	10.519	10.250			11.000
	6 Gail Place EAST LISMORE	11.287	10.529	10.250			11.000
	7 Gail Place EAST LISMORE	11.343	10.519	10.250			11.000
	33 Harmony Avenue EAST LISMORE	11.523	11.154	10.846			11.000
	1 Hutley Place EAST LISMORE	11.01	7.67	7.53			12.2
	3 Hutley Place EAST LISMORE	10.92	7.63	7.58			12.2
	5 Hutley Place EAST LISMORE	10.88	7.54	7.50			12.2
	1 Junction Street EAST LISMORE	11.51	10.80	10.41	(Bruce Galapoli AR)		12.2
	5 Junction Street EAST LISMORE	10.89	9.64	9.35			12.2

Date	Street Address	Floor Level	Gate Level	Road Centre	Description	1in10yr Level	1in100yr Level
	8 Junction Street EAST LISMORE	11.75	8.97	9.19			12.2
	9 Junction Street EAST LISMORE	11.89	9.49	9.49	(Sidney & Hacking)		12.2
	25 Junction Street EAST LISMORE	11.94	8.99	9.23			12.2
	27 Junction Street EAST LISMORE	11.91	9.19	9.91			12.2
	29 Junction Street EAST LISMORE	11.96	10.36	10.81			12.2
	259 Keen Street EAST LISMORE	9.81	8.83	9.05	City Toyota Service Depot		12.2
	261 Keen Street EAST LISMORE	11.10	8.80	9.08			12.2
	263 Keen Street EAST LISMORE	8.92	8.77	9.09			12.2
	265 Keen Street EAST LISMORE	12.34	8.73	9.15			12.2
	269 Keen Street EAST LISMORE	10.56	8.86	9.30			12.2
	273 Keen Street EAST LISMORE	10.62	9.60	9.75			12.2
	275 Keen Street EAST LISMORE	11.16	9.89	10.04			12.2
	281 Keen Street EAST LISMORE	12.01	11.74	11.75			12.2
	283 Keen Street EAST LISMORE	12.99	12.48	12.36			12.2
	285 Keen Street EAST LISMORE	13.62	12.80	12.76			12.2
	287 Keen Street EAST LISMORE	13.73	13.32	13.25			12.2
	289 Keen Street EAST LISMORE	13.61	13.52	14.00			12.2
	289A Keen Street EAST LISMORE	13.17	13.43	14.10			12.4
	291 Keen Street EAST LISMORE	12.92	11.92	13.55			12.2
	299 Keen Street EAST LISMORE	12.04	11.85	12.72		10.6	12.2
	303 Keen Street EAST LISMORE	11.44	11.20	12.41		10.6	12.2
	305 Keen Street EAST LISMORE	12.53	10.95	12.33		10.6	12.2
	307 Keen Street EAST LISMORE	12.05	11.03	12.25		10.6	12.2
	309 Keen Street EAST LISMORE	12.69	11.11	12.20		10.5	12.2
	311 Keen Street EAST LISMORE	12.46	10.77	11.73		10.5	12.2
	313 Keen Street EAST LISMORE	12.02	10.06	10.86		10.5	12.2
	315 Keen Street EAST LISMORE	11.49	9.94	10.62		10.5	12.2
	317 Keen Street EAST LISMORE	11.90	9.32	10.23		10.5	12.2
	338 Keen Street EAST LISMORE	15.98	11.05	11.84	Basketball Stadium		12.2
	338 Keen Street EAST LISMORE	7.63	9.90	10.97	Albert Park Baseball Fields	10.5	12.1
	338 Keen Street EAST LISMORE	9.30	9.90	11.84	Albert Park "New" Canteen	10.5	12.1
	338 Keen Street EAST LISMORE	11.25	12.30	12.62	Albert Park "Old" Clubhouse	10.5	12.1
	344 Keen Street EAST LISMORE	18.47	14.09	12.63	Albert Park School		12.1
	351 Keen Street EAST LISMORE	14.18	14.54	14.86			11.8
	353 Keen Street EAST LISMORE	15.69	15.16	15.18			11.8

Date	Street Address	Floor Level	Gate Level	Road Centre	Description	1in10yr Level	1in100yr Level
	355 Keen Street EAST LISMORE	14.99	15.43	15.84			11.8
	357 Keen Street EAST LISMORE	17.29	15.82	16.38			11.8
	359 Keen Street EAST LISMORE	16.61	15.90	16.47			11.8
	361 Keen Street EAST LISMORE	16.19	16.10	16.69			11.8
	371 Keen Street EAST LISMORE	15.12	15.38	16.05			11.8
	1 Marlyn Avenue EAST LISMORE	11.824	11.037	11.060			11.000
	3 Marlyn Avenue EAST LISMORE	11.859	10.999	11.056			11.000
	4 Marlyn Avenue EAST LISMORE	11.951	11.221	11.191			11.000
	6 Marlyn Avenue EAST LISMORE	11.955	11.333	11.265			11.000
	7 Marlyn Avenue EAST LISMORE	11.458	10.906	10.980			11.000
	8 Marlyn Avenue EAST LISMORE	12.587	11.301	11.314			11.000
	10 Marlyn Avenue EAST LISMORE	11.993	11.508	11.314			11.000
	11 Marlyn Avenue EAST LISMORE	11.409	10.763	10.795			11.000
	12 Marlyn Avenue EAST LISMORE	11.743	11.467	11.150			11.000
	13 Marlyn Avenue EAST LISMORE	10.884	10.496	10.604			11.000
	14 Marlyn Avenue EAST LISMORE	11.429	10.903	10.870			11.000
	15 Marlyn Avenue EAST LISMORE	11.361	10.446	10.477			11.000
	16 Marlyn Avenue EAST LISMORE	11.452	10.763	10.704			11.000
	17 Marlyn Avenue EAST LISMORE	11.061	10.315	10.347			11.000
	18 Marlyn Avenue EAST LISMORE	11.368	10.735	10.529			11.000
	19 Marlyn Avenue EAST LISMORE	11.012	10.235	10.295			11.000
	20 Marlyn Avenue EAST LISMORE	11.359	10.487	10.378			11.000
	21 Marlyn Avenue EAST LISMORE	10.687	10.209	10.242			11.000
	22 Marlyn Avenue EAST LISMORE	11.213	10.488	10.242			11.000
	141 Military Road EAST LISMORE	13.995	13.685	13.631			11.000
	145 Military Road EAST LISMORE	12.585	12.785	13.034			11.000
	147 Military Road EAST LISMORE	11.013	11.155	11.396			11.000
	148 Military Road EAST LISMORE	11.948	11.193	11.233			11.000
	163 Military Road EAST LISMORE	10.440	9.940	9.783			11.000
	215 Molesworth Street EAST LISMORE	10.86	9.99	10.23	Magellan Street Motors		12.3
	218 Molesworth Street EAST LISMORE	13.63	10.33	10.57	ROUS WATER		12.4
	218 Molesworth Street EAST LISMORE	10.73	10.45	10.51	On-Q Human Resources		12.3
	219 Molesworth Street EAST LISMORE	12.14	10.06	10.30			12.3
	221 Molesworth Street EAST LISMORE	12.38	10.11	10.43			12.3
	223 Molesworth Street EAST LISMORE	10.70	10.10	10.46			12.3

Date	Street Address	Floor Level	Gate Level	Road Centre	Description	1in10yr Level	1in100yr Level
	225 Molesworth Street EAST LISMORE	11.05	10.20	10.53			12.3
	229 Molesworth Street EAST LISMORE	12.43	10.21	10.51			12.3
	231 Molesworth Street EAST LISMORE	10.60	10.23	10.48			12.2
	235 Molesworth Street EAST LISMORE	12.08	10.08	10.43			12.2
	237 Molesworth Street EAST LISMORE	12.02	10.10	10.43			12.2
	239 Molesworth Street EAST LISMORE	12.48	10.17	10.37			12.2
	241 Molesworth Street EAST LISMORE	12.28	10.21	10.30			12.2
	244 Molesworth Street EAST LISMORE	10.66	10.31	10.46	NEW OLYMPIC MOTEL		12.2
	245 Molesworth Street EAST LISMORE	12.47	10.24	10.27			12.2
	247 Molesworth Street EAST LISMORE	10.64	10.41	10.52	(Council Depot)		12.2
	250 Molesworth Street EAST LISMORE	13.65	10.42	10.45	Officeworks		12.2
	254 Molesworth Street EAST LISMORE	11.76	10.30	10.32	FIRST PACIFIC CREDIT UNION		12.2
	258 Molesworth Street EAST LISMORE	11.35	10.3	10.32	Karinga Motel		12.3
	264 Molesworth Street EAST LISMORE	13.12	10.2	10.2			12.3
	266 Molesworth Street EAST LISMORE	10.25	10.11	10.1	Mobile IT Services / Advanced Auto refinishers		12.3
	270 Molesworth Street EAST LISMORE	11.29	10.03	9.92	All Trades Equipment		12.3
	296 Molesworth Street EAST LISMORE	11.37	10.51	10.52	Multitask Human Resources Foundation		12.3
	298 Molesworth Street EAST LISMORE	13.34	10.32	10.48	(First Floor)		12.2
	302 Molesworth Street EAST LISMORE	12.38	10.30	10.43			12.2
	306 Molesworth Street EAST LISMORE	10.94	10.27	10.37			12.2
	308 Molesworth Street EAST LISMORE	12.37	10.34	10.29			12.2
	310 Molesworth Street EAST LISMORE	12.38	10.31	10.27			12.2
	312 Molesworth Street EAST LISMORE	12.69	10.33	10.28			12.2
	314 Molesworth Street EAST LISMORE	12.31	10.25	10.27			12.2
	316 Molesworth Street EAST LISMORE	11.89	10.10	10.31			12.2
	318 Molesworth Street EAST LISMORE	12.81	9.94	10.03			12.2
	2/225 Molesworth Street EAST LISMORE	10.57	10.20	10.53			12.3
	98 Neilson Street EAST LISMORE	11.342	11.128	11.267			11.000
	100 Neilson Street EAST LISMORE	11.642	10.947	11.330			11.000
	102 Neilson Street EAST LISMORE	11.579	10.907	11.392			11.000
	108 Neilson Street EAST LISMORE	11.176	11.131	11.699			11.000
	110 Neilson Street EAST LISMORE	10.984	11.224	11.948			11.000
	112 Neilson Street EAST LISMORE	12.859	11.262	12.110			11.000
	114 Neilson Street EAST LISMORE	12.337	11.128	11.449			11.000
	116 Neilson Street EAST LISMORE	12.794	12.720	13.923			11.000

Date	Street Address	Floor Level	Gate Level	Road Centre	Description	1in10yr Level	1in100yr Level
	118 Neilson Street EAST LISMORE	13.339	11.359	14.874			11.000
	120 Neilson Street EAST LISMORE	12.098	12.014	12.453			11.000
	122 Neilson Street EAST LISMORE	11.746	11.812	11.754			11.000
	11 Parkes Street EAST LISMORE	11.07	7.99	7.97			12.3
	13 Parkes Street EAST LISMORE	11.35	8.76	8.90			12.3
	15 Parkes Street EAST LISMORE	11.65	8.82	8.99			12.3
	16 Parkes Street EAST LISMORE	10.69	8.51	8.99			12.3
	17 Parkes Street EAST LISMORE	12.26	9.02	9.15			12.3
	18 Parkes Street EAST LISMORE	10.65	8.52	9.06			12.3
	19 Parkes Street EAST LISMORE	12.36	9.17	9.18			12.3
	20 Parkes Street EAST LISMORE	10.80	8.80	9.17			12.3
	21 Parkes Street EAST LISMORE	11.40	9.17	9.28			12.3
	22 Parkes Street EAST LISMORE	11.00	8.94	9.20			12.3
	23 Parkes Street EAST LISMORE	12.23	9.82	9.92			12.3
	24 Parkes Street EAST LISMORE	10.91	9.07	9.31			12.3
	25 Parkes Street EAST LISMORE	12.36	10.04	10.09			12.3
	27 Parkes Street EAST LISMORE	12.47	10.15	10.17			12.3
	29 Parkes Street EAST LISMORE	12.53	10.24	10.35			12.3
	30 Parkes Street EAST LISMORE	12.25	9.91	10.19			12.3
	31 Parkes Street EAST LISMORE	12.53	10.36	10.55			12.3
	32 Parkes Street EAST LISMORE	12.27	10.10	10.39			12.3
	33 Parkes Street EAST LISMORE	11.82	10.78	10.78			12.3
	34 Parkes Street EAST LISMORE	12.43	10.19	10.44			12.3
	35 Parkes Street EAST LISMORE	12.06	11.02	11.01			12.3
	36 Parkes Street EAST LISMORE	12.58	10.26	10.76			12.3
	37 Parkes Street EAST LISMORE	12.70	11.43	11.30			12.3
	39 Parkes Street EAST LISMORE	13.21	11.90	11.61			12.3
	40 Parkes Street EAST LISMORE	13.11	10.67	11.17			12.3
	41 Parkes Street EAST LISMORE	13.87	12.35	12.04			12.3
	42 Parkes Street EAST LISMORE	12.63	10.94	11.44			12.3
	43 Parkes Street EAST LISMORE	14.09	12.85	12.50			12.3
	44 Parkes Street EAST LISMORE	13.28	11.20	11.79			12.3
	46 Parkes Street EAST LISMORE	13.42	11.72	12.37			12.3
	3 Paunelle Avenue EAST LISMORE	12.118	11.493	11.373			11.000
	4 Paunelle Avenue EAST LISMORE	11.773	11.221	11.103			11.000

Date	Street Address	Floor Level	Gate Level	Road Centre	Description	1in10yr Level	1in100yr Level
	5 Paunelle Avenue EAST LISMORE	12.118	11.493	11.373			11.000
	7 Paunelle Avenue EAST LISMORE	11.650	11.217	11.133			11.000
	9 Paunelle Avenue EAST LISMORE	11.514	11.036	11.014			11.000
	10 Paunelle Avenue EAST LISMORE	11.516	11.048	10.977			11.000
	11 Paunelle Avenue EAST LISMORE	11.703	10.835	10.847			11.000
	12 Paunelle Avenue EAST LISMORE	11.658	10.946	10.791			11.000
	13 Paunelle Avenue EAST LISMORE	11.204	10.881	10.739			11.000
	14 Paunelle Avenue EAST LISMORE	11.436	10.763	10.699			11.000
	15 Paunelle Avenue EAST LISMORE	11.110	10.653	10.704			11.000
	16 Paunelle Avenue EAST LISMORE	11.077	10.621	10.630			11.000
	17 Paunelle Avenue EAST LISMORE	10.971	10.567	10.595			11.000
	18 Paunelle Avenue EAST LISMORE	11.487	10.589	10.562			11.000
	19 Paunelle Avenue EAST LISMORE	11.126	10.573	10.538			11.000
	20 Paunelle Avenue EAST LISMORE	11.392	10.519	10.481			11.000
	21 Paunelle Avenue EAST LISMORE	11.134	10.495	10.437			11.000
	22 Paunelle Avenue EAST LISMORE	11.256	10.457	10.181			11.000
	23 Paunelle Avenue EAST LISMORE	11.090	10.490	10.298			11.000
	9 Second Avenue EAST LISMORE	12.43	11.86	12.46			12.4
	11 Second Avenue EAST LISMORE	12.20	11.63	12.17			12.4
	12 Second Avenue EAST LISMORE	13.04	12.31	12.13			12.4
	13 Second Avenue EAST LISMORE	13.10	11.15	11.53			12.4
	15 Second Avenue EAST LISMORE	13.03	11.08	11.54			12.4
	20 Second Avenue EAST LISMORE	12.60	11.43	11.50			12.4
	22 Second Avenue EAST LISMORE	12.82	11.59	11.51			12.4
	24 Second Avenue EAST LISMORE	12.92	11.74	11.62			12.4
	25 Second Avenue EAST LISMORE	12.53	11.65	12.12			12.4
	26 Second Avenue EAST LISMORE	13.30	12.17	12.12			12.4
	27 Second Avenue EAST LISMORE	13.05	12.36	12.57			12.4
	28 Second Avenue EAST LISMORE	13.62	12.71	12.57			12.4
	29 Second Avenue EAST LISMORE	13.53	12.83	13.00			12.4
	30 Second Avenue EAST LISMORE	14.02	13.19	13.19			12.4
	31 Second Avenue EAST LISMORE	14.67	13.87	13.91			12.4
	32 Second Avenue EAST LISMORE	14.67	13.87	13.91			12.4
	1 Spring Street EAST LISMORE	11.83	9.71	10.09			12.4
	3 Spring Street EAST LISMORE	11.77	9.57	9.77			12.4

Date	Street Address	Floor Level	Gate Level	Road Centre	Description	1in10yr Level	1in100yr Level
	5 Spring Street EAST LISMORE	11.71	9.43	9.71			12.4
	7 Spring Street EAST LISMORE	12.38	9.59	9.85			12.4
	8 Spring Street EAST LISMORE	11.59	9.44	9.70			12.4
	10 Spring Street EAST LISMORE	11.82	9.67	9.82			12.4
	12 Spring Street EAST LISMORE	12.23	9.86	10.00			12.4
	13 Spring Street EAST LISMORE	11.83	9.77	9.91			12.4
	14 Spring Street EAST LISMORE	12.20	9.98	10.17			12.4
	15 Spring Street EAST LISMORE	11.96	9.92	10.17			12.4
	16 Spring Street EAST LISMORE	12.31	10.10	10.29			12.4
	19 Spring Street EAST LISMORE	12.37	10.20	10.36			12.4
	21 Spring Street EAST LISMORE	12.29	10.16	10.47			12.4
	22 Spring Street EAST LISMORE	12.45	10.30	10.47			12.4
	24 Spring Street EAST LISMORE	12.54	10.45	10.58			12.4
	26 Spring Street EAST LISMORE	12.59	10.66	10.74			12.4
	31 Spring Street EAST LISMORE	12.48	10.31	10.63			12.4
	33 Spring Street EAST LISMORE	13.53	12.37	12.66			12.4
	5 Stocks Street EAST LISMORE	13.63	12.66	13.25			12.4
	7 Stocks Street EAST LISMORE	13.54	12.98	13.70			12.4
	9 Stocks Street EAST LISMORE	14.03	13.38	14.12			12.4
	48 Victoria Street EAST LISMORE	9.26	8.58	8.49	North Lismore Motors		12.3
	50 Victoria Street EAST LISMORE	9.26	8.58	8.49	North Lismore Motors		12.3
	52 Victoria Street EAST LISMORE	9.26	8.58	8.49	North Lismore Motors		12.3
	54 Victoria Street EAST LISMORE	10.87	8.62	8.46		10.7	12.3
	39 Walker Street EAST LISMORE	11.454	11.180	11.285			11.000
	41 Walker Street EAST LISMORE	11.574	10.884	11.335			11.000
	45 Walker Street EAST LISMORE						11.000
	49 Walker Street EAST LISMORE	12.212	11.224	11.451			11.000
	51 Walker Street EAST LISMORE	11.980	11.254	11.538			11.000
	53 Walker Street EAST LISMORE	11.487	11.483	11.713			11.000
	55 Walker Street EAST LISMORE	12.129	11.525	11.800			11.000
	57 Walker Street EAST LISMORE	12.083	11.594	11.912			11.000
	59 Walker Street EAST LISMORE	12.396	11.723	12.057			11.000
	61 Walker Street EAST LISMORE	12.456	11.882	12.125			11.000
	63 Walker Street EAST LISMORE	11.992	11.992	12.233			11.000
	73 Walker Street EAST LISMORE	12.070	12.163	12.324			11.000

Date	Street Address	Floor Level	Gate Level	Road Centre	Description	1in10yr Level	1in100yr Level
	75 Walker Street EAST LISMORE	12.647	12.135	12.400			11.000
	77 Walker Street EAST LISMORE	11.964	12.155	12.430			11.000
	83 Walker Street EAST LISMORE	12.431	11.944	11.953			11.000
	85 Walker Street EAST LISMORE	11.948	11.928	12.353			11.000
	87 Walker Street EAST LISMORE	12.049	12.140	12.466			11.000
	89 Walker Street EAST LISMORE	12.088	12.194	12.632			11.000
	91 Walker Street EAST LISMORE	13.573	12.424	12.839			11.000
	93 Walker Street EAST LISMORE	14.521	13.592	13.651			11.000
	97 Walker Street EAST LISMORE	14.010	14.489	14.632			11.000
	99 Walker Street EAST LISMORE	15.151	15.303	15.421			11.000
	10 Wolstenholm Street EAST LISMORE	10.72	8.44	7.98		10.5	12.2
	12 Wolstenholm Street EAST LISMORE	9.75	8.76	8.52	vacant	10.5	12.2
	14 Wolstenholm Street EAST LISMORE	12.00	9.08	8.95		10.5	12.2
	22 Wyrallah Road EAST LISMORE	12.63	12.29	12.54			12.4
	30 Wyrallah Road EAST LISMORE	12.75	11.28	11.59			12.4
	34 Wyrallah Road EAST LISMORE	12.65	11.29	11.35			12.4
	36 Wyrallah Road EAST LISMORE	12.10	11.20	11.26			12.4
	40 Wyrallah Road EAST LISMORE	12.80	11.11	11.31			12.4
	42 Wyrallah Road EAST LISMORE	11.54	10.97	11.34	(shop)		12.4
	44 Wyrallah Road EAST LISMORE	11.68	11.39	11.47	(serv.stat)		12.4
	48 Wyrallah Road EAST LISMORE	12.16	11.29	11.66	(Shop)		12.4
	58 Wyrallah Road EAST LISMORE	13.26	11.49	11.66			12.4
	60 Wyrallah Road EAST LISMORE	13.24	11.55	11.71			12.4
	62 Wyrallah Road EAST LISMORE	12.07	11.68	11.72	(Rear Shops 7)		12.4
	62 Wyrallah Road EAST LISMORE	12.09	12.00	11.75	(Front Shops 6)		12.4
	3 Allen Street GIRARDS HILL	12.98	11.08	11.28			12.3
	4 Allen Street GIRARDS HILL	14.33	11.98	11.99			12.3
	5 Allen Street GIRARDS HILL	13.05	12.52	12.66			12.3
	3A Allen Street GIRARDS HILL	12.01	11.90	11.99			12.3
	4 Anstey Street GIRARDS HILL	13.72	11.35	11.73			12.3
	6 Anstey Street GIRARDS HILL	12.82	12.88	12.58			12.3
	7 Anstey Street GIRARDS HILL	15.88	14.02	13.52			12.3
	8 Anstey Street GIRARDS HILL	13.67	13.11	13.73			12.3
	11 Anstey Street GIRARDS HILL	19.19	15.32	14.86			12.3
	14 Anstey Street GIRARDS HILL	16.78	16.62	17.04			12.3

Date	Street Address	Floor Level	Gate Level	Road Centre	Description	1in10yr Level	1in100yr Level
	15 Anstey Street GIRARDS HILL	17.95	16.27	15.73			12.3
	17 Anstey Street GIRARDS HILL	18.19	16.62	16.37			12.3
	19 Anstey Street GIRARDS HILL	19.08	17.22	17.04			12.3
	21 Anstey Street GIRARDS HILL	20.66	17.28	17.04			12.3
	1/5 Anstey Street GIRARDS HILL	15.50	12.57	12.38			12.3
	41 Ballina Road GIRARDS HILL	11.91	9.63	10.15			12.3
	43 Ballina Road GIRARDS HILL	12.54	9.42	9.96			12.3
	45 Ballina Road GIRARDS HILL	12.17	9.10	9.71			12.3
	47 Ballina Road GIRARDS HILL	12.20	9.03	9.57			12.3
	49 Ballina Road GIRARDS HILL	12.42	8.90	9.49			12.3
	53 Ballina Road GIRARDS HILL	10.24	8.54	9.15			12.3
	55 Ballina Road GIRARDS HILL	9.20	8.41	8.99	Neil Pollard Used Cars		12.3
	67 Ballina Road GIRARDS HILL	10.76	8.21	8.88			12.3
	69 Ballina Road GIRARDS HILL	10.06	8.45	8.98			12.3
	71 Ballina Road GIRARDS HILL	11.17	8.58	9.07			12.3
	73 Ballina Road GIRARDS HILL	11.34	8.78	9.19			12.3
	75 Ballina Road GIRARDS HILL	12.95	8.90	9.31			12.3
	77 Ballina Road GIRARDS HILL	12.37	8.96	9.39			12.3
	79 Ballina Road GIRARDS HILL	11.37	9.08	9.40			12.3
	81 Ballina Road GIRARDS HILL	9.97	9.23	9.47			12.3
	83 Ballina Road GIRARDS HILL	11.64	9.41	9.62			12.3
	85 Ballina Road GIRARDS HILL	12.83	9.51	9.62			12.3
	87 Ballina Road GIRARDS HILL	11.47	9.48	9.62	House of Books		12.3
	99 Ballina Road GIRARDS HILL	12.12	9.89	10.07			12.3
	109 Ballina Road GIRARDS HILL	12.87	9.97	10.07			12.3
	115 Ballina Road GIRARDS HILL	12.28	10.10	10.30			12.3
	117 Ballina Road GIRARDS HILL	12.37	10.11	10.36	Wilson Motel		12.3
	121 Ballina Road GIRARDS HILL	12.47	10.69	10.71			12.3
	123 Ballina Road GIRARDS HILL	12.63	10.97	10.93			12.3
	144 Dawson Street GIRARDS HILL	12.48	9.21	9.49			12.3
	145 Dawson Street GIRARDS HILL	12.54	9.2	9.49			12.3
	146 Dawson Street GIRARDS HILL	11.76	9.33	9.50			12.3
	147 Dawson Street GIRARDS HILL	11.15	9.28	9.53			12.3
	148 Dawson Street GIRARDS HILL	12.83	9.30	9.58			12.3
	149 Dawson Street GIRARDS HILL	13.00	9.34	9.50			12.3

Date	Street Address	Floor Level	Gate Level	Road Centre	Description	1in10yr Level	1in100yr Level
	150 Dawson Street GIRARDS HILL	11.54	9.49	9.58			12.3
	151 Dawson Street GIRARDS HILL	12.37	9.39	9.57			12.3
	152 Dawson Street GIRARDS HILL	11.75	9.77	10.02			12.3
	153 Dawson Street GIRARDS HILL	12.23	9.43	9.59			12.3
	155 Dawson Street GIRARDS HILL	11.78	9.42	9.70			12.3
	156 Dawson Street GIRARDS HILL	12.75	10.15	10.22			12.3
	157 Dawson Street GIRARDS HILL	12.42	9.77	10.17			12.3
	159 Dawson Street GIRARDS HILL	12.67	9.84	10.28			12.3
	160 Dawson Street GIRARDS HILL	11.30	10.45	10.50			12.3
	161 Dawson Street GIRARDS HILL	12.90	9.94	10.22			12.3
	163 Dawson Street GIRARDS HILL	12.11	10.24	10.50			12.3
	164 Dawson Street GIRARDS HILL	11.94	10.80	10.83			12.3
	167 Dawson Street GIRARDS HILL	10.89	10.46	10.83			12.3
	168 Dawson Street GIRARDS HILL	12.46	11.73	11.55			12.3
	171 Dawson Street GIRARDS HILL	12.80	10.87	11.22			12.3
	172 Dawson Street GIRARDS HILL	14.37	12.12	11.96			12.3
	173 Dawson Street GIRARDS HILL	12.55	10.49	11.51			12.3
	174 Dawson Street GIRARDS HILL	15.30	13.67	13.53			12.3
	175 Dawson Street GIRARDS HILL	13.54	11.52	11.65			12.3
	177 Dawson Street GIRARDS HILL	12.58	12.08	12.46			12.3
	179 Dawson Street GIRARDS HILL	13.32	12.78	13.07			12.3
	72 Esmonde Street GIRARDS HILL	13.49	11.53	11.71			12.4
	5 Garrard Lane GIRARDS HILL	12.40	11.98	12.01			12.4
	7 Garrard Lane GIRARDS HILL	12.02	11.95	11.93			12.4
	9 Garrard Lane GIRARDS HILL	14.00	11.74	11.73			12.4
	17 Garrard Street GIRARDS HILL	12.86	12.00	12.30			12.4
	18 Garrard Street GIRARDS HILL	14.02	11.96	12.30			12.4
	19 Garrard Street GIRARDS HILL	12.51	11.88	12.20			12.4
	20 Garrard Street GIRARDS HILL	12.67	11.95	12.20	6 Units		12.4
	21 Garrard Street GIRARDS HILL	13.81	11.77	12.14			12.4
	22 Garrard Street GIRARDS HILL	12.98	11.96	11.96	Unit 1		12.4
	22 Garrard Street GIRARDS HILL	12.99	11.96	11.96	Unit 2 & 3		12.4
	22 Garrard Street GIRARDS HILL	15.47	11.96	11.96	Unit 4 - 8		12.4
	22 Garrard Street GIRARDS HILL	15.49	11.96	11.96	Unit 9 - 11		12.4
	23 Garrard Street GIRARDS HILL	13.91	11.78	12.02			12.4

Date	Street Address	Floor Level	Gate Level	Road Centre	Description	1in10yr Level	1in100yr Level
	29 Garrard Street GIRARDS HILL	13.89	11.65	11.94			12.4
	33 Garrard Street GIRARDS HILL	12.97	11.67	11.89			12.4
	2 Hayward Street GIRARDS HILL	11.72	9.69	9.69			12.3
	4 Hayward Street GIRARDS HILL	12.80	9.60	9.75			12.3
	6 Hayward Street GIRARDS HILL	13.08	9.60	9.79			12.3
	7 Hayward Street GIRARDS HILL	13.07	9.87	9.81			12.3
	8 Hayward Street GIRARDS HILL	11.88	9.83	9.78			12.3
	10 Hayward Street GIRARDS HILL	12.83	9.77	9.80			12.3
	11 Hayward Street GIRARDS HILL	12.18	9.88	9.91			12.3
	12 Hayward Street GIRARDS HILL	12.89	9.74	9.87			12.3
	13 Hayward Street GIRARDS HILL	12.10	9.94	10.03			12.3
	15 Hayward Street GIRARDS HILL	12.98	10.02	9.94			12.3
	3 James Street GIRARDS HILL	11.67	9.38	9.47			12.2
	4 James Street GIRARDS HILL	12.20	9.89	10.44			12.2
	5 James Street GIRARDS HILL	12.10	10.03	10.18			12.2
	6 James Street GIRARDS HILL	12.04	10.34	10.91			12.3
	7 James Street GIRARDS HILL	11.01	10.28	10.35			12.2
	8 James Street GIRARDS HILL	11.29	11.17	11.75			12.3
	10 James Street GIRARDS HILL	12.24	12.01	12.62			12.3
	11 James Street GIRARDS HILL	12.98	10.67	10.69			12.2
	12 James Street GIRARDS HILL	12.97	12.77	13.36			12.3
	13 James Street GIRARDS HILL	14.00	11.55	11.54			12.2
	14 James Street GIRARDS HILL	14.25	14.18	14.62			12.3
	15 James Street GIRARDS HILL	14.80	13.06	12.66			12.2
	244 Keen Street GIRARDS HILL	11.47	8.05	8.53			12.3
	246 Keen Street GIRARDS HILL	12.75	8.10	8.64			12.3
	250 Keen Street GIRARDS HILL	10.31	8.34	8.75			12.3
	252 Keen Street GIRARDS HILL	10.51	8.53	8.81			12.3
	254 Keen Street GIRARDS HILL	11.90	8.71	9.02			12.3
	256 Keen Street GIRARDS HILL	11.88	8.70	9.07			12.3
	258 Keen Street GIRARDS HILL	10.77	8.74	9.08			12.3
	260 Keen Street GIRARDS HILL	11.04	8.79	9.07			12.2
	262 Keen Street GIRARDS HILL	11.04	8.84	9.09			12.2
	264 Keen Street GIRARDS HILL	12.49	8.98	9.14			12.2
	266 Keen Street GIRARDS HILL	9.86	9.16	9.17			12.2

Date	Street Address	Floor Level	Gate Level	Road Centre	Description	1in10yr Level	1in100yr Level
	276 Keen Street GIRARDS HILL	11.69	9.43	9.56			12.2
	280 Keen Street GIRARDS HILL	11.08	10.06	9.84			12.2
	296 Keen Street GIRARDS HILL	9.7	9.6	9.97			12.2
	336 Keen Street GIRARDS HILL	14.68	11.47	10.74			12.2
	250A Keen Street GIRARDS HILL	12.71	8.96	8.78			12.3
	252A Keen Street GIRARDS HILL	13.11	8.96	8.78			12.3
	254A Keen Street GIRARDS HILL	10.01	9.18	9.39	Joinery		12.3
	256A Keen Street GIRARDS HILL	11.71	9.25	9.62			12.3
	37 Wyrallah Road GIRARDS HILL	12.73	11.69	11.90			12.4
	39 Wyrallah Road GIRARDS HILL	12.46	11.47	11.59			12.4
	41 Wyrallah Road GIRARDS HILL	14.85	11.40	11.45			12.4
	43 Wyrallah Road GIRARDS HILL	14.72	11.20	11.31			12.4
	45 Wyrallah Road GIRARDS HILL	11.75	11.12	11.26	(Shop)		12.4
	47 Wyrallah Road GIRARDS HILL	13.28	11.02	11.32			12.4
	51 Wyrallah Road GIRARDS HILL	12.39	11.07	11.32			12.4
	57 Wyrallah Road GIRARDS HILL	12.67	11.24	11.37			12.4
	59 Wyrallah Road GIRARDS HILL	12.67	11.24	11.37			12.4
	63 Wyrallah Road GIRARDS HILL	12.04	11.21	11.40			12.4
	67 Wyrallah Road GIRARDS HILL	11.76	11.27	11.47			12.4
	69 Wyrallah Road GIRARDS HILL	11.67	11.33	11.46	(Butcher Shop)		12.4
	71 Wyrallah Road GIRARDS HILL	12.28	11.43	11.64			12.4
	73 Wyrallah Road GIRARDS HILL	13.64	11.40	11.64			12.4
	75 Wyrallah Road GIRARDS HILL	13.52	11.42	11.66			12.4
	83 Wyrallah Road GIRARDS HILL	13.53	11.43	11.72			12.4
	85 Wyrallah Road GIRARDS HILL	12.50	11.55	11.75	AXA Insurance		12.4
	89 Wyrallah Road GIRARDS HILL	14.02	11.61	11.89			12.4
	41A Wyrallah Road GIRARDS HILL	11.74	11.34	11.45			12.4
	43B Wyrallah Road GIRARDS HILL	11.69	11.20	11.31	(Shop)		12.4
	45A Wyrallah Road GIRARDS HILL	14.68	11.35	11.26			12.4